

1200 University Avenue

Des Moines, Iowa

**FOR
LEASE**

**Only
One Space
Remains**



AVAILABLE SUITES

<u>SUITE</u>	<u>SQUARE FEET</u>	<u>LEASE RATE</u>	<u>AVAILABLE</u>
150 B	768 SF	\$13.00 PSF FSG	Now

Property Description

- ◆ 768 Square Feet of 1st Floor Office Space Available For Lease
- ◆ Lease Rate: \$13.00 PSF FSG

Amenities

- ◆ Easy Access to Downtown Des Moines and I-235
- ◆ Remodeled Restrooms
- ◆ Shared Conference Room
- ◆ ICN Fiber Optic Hub in Building
- ◆ Ample On-Site Parking

FOR ADDITIONAL INFORMATION CONTACT:

BILL WRIGHT

515.471.4350 Office

515.210.3050 Cell

bill.wright@terruss.com



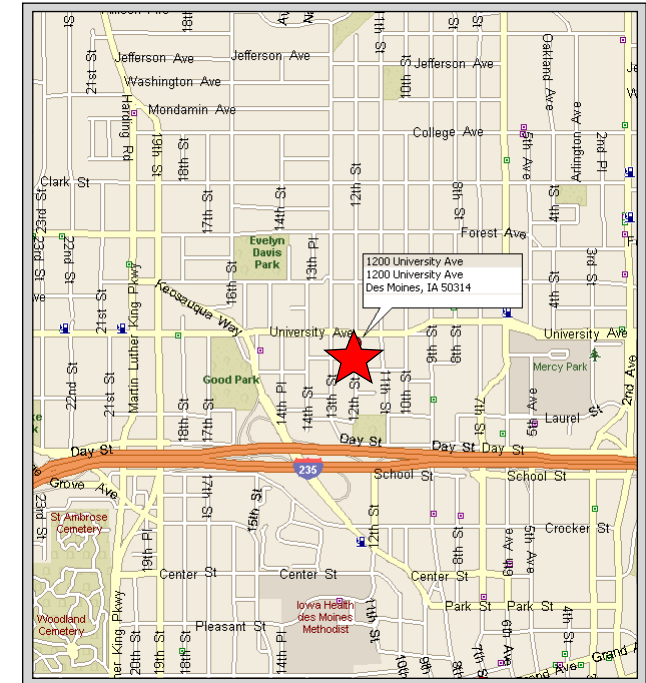
1200 University Avenue

Des Moines, Iowa

**FOR
LEASE**



LOCATION MAP

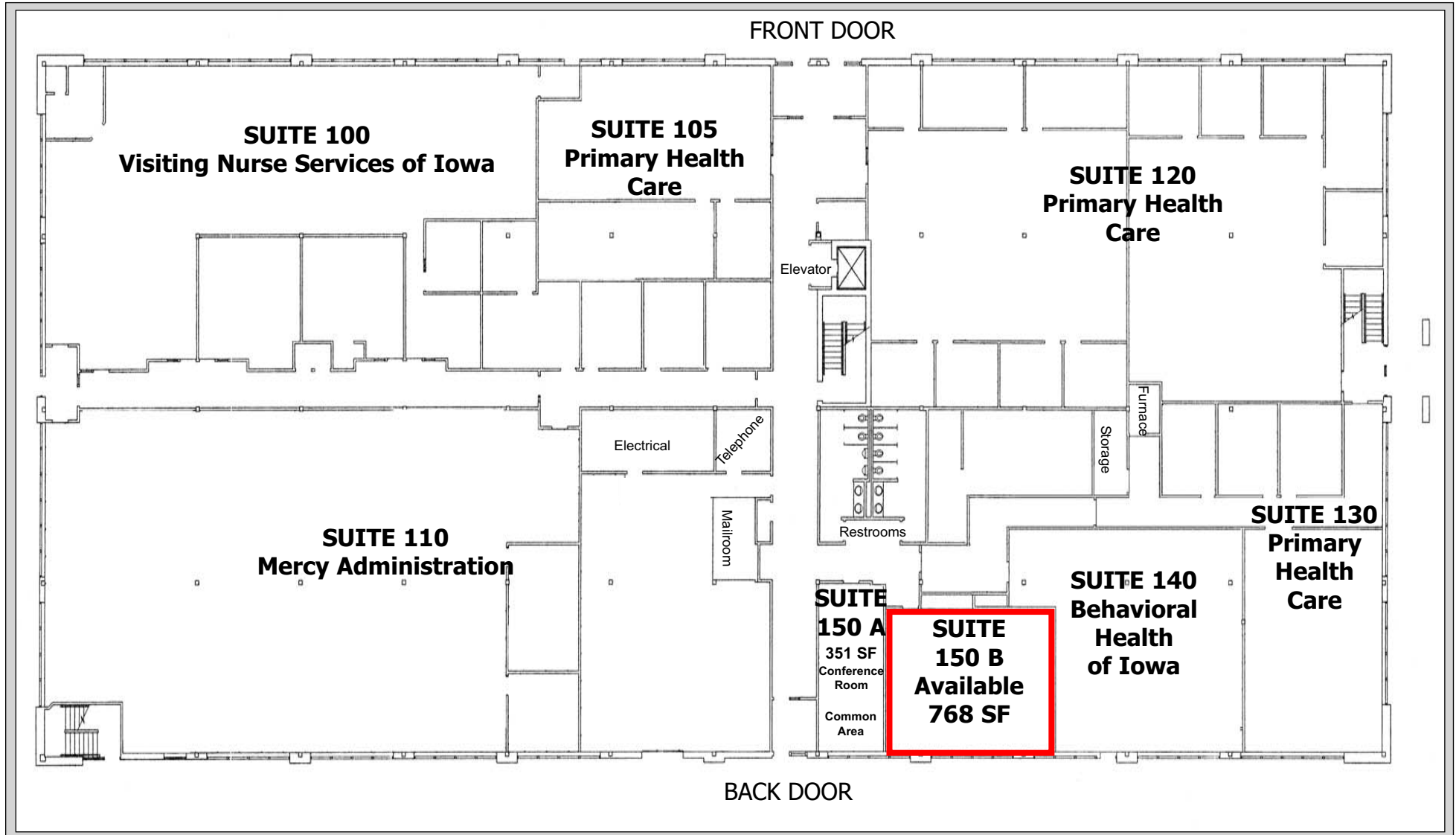


DEMOGRAPHICS (2011)

Radius (miles)	1.0	3.0	5.0
Population	16,189	98,526	207,278
Households	6,336	40,617	86,135
Avg. HH Income	\$34,722	\$49,261	\$54,510
Median HH Income	\$26,586	\$38,422	\$44,011
Avg. Median Age	31.41	34.44	35.07



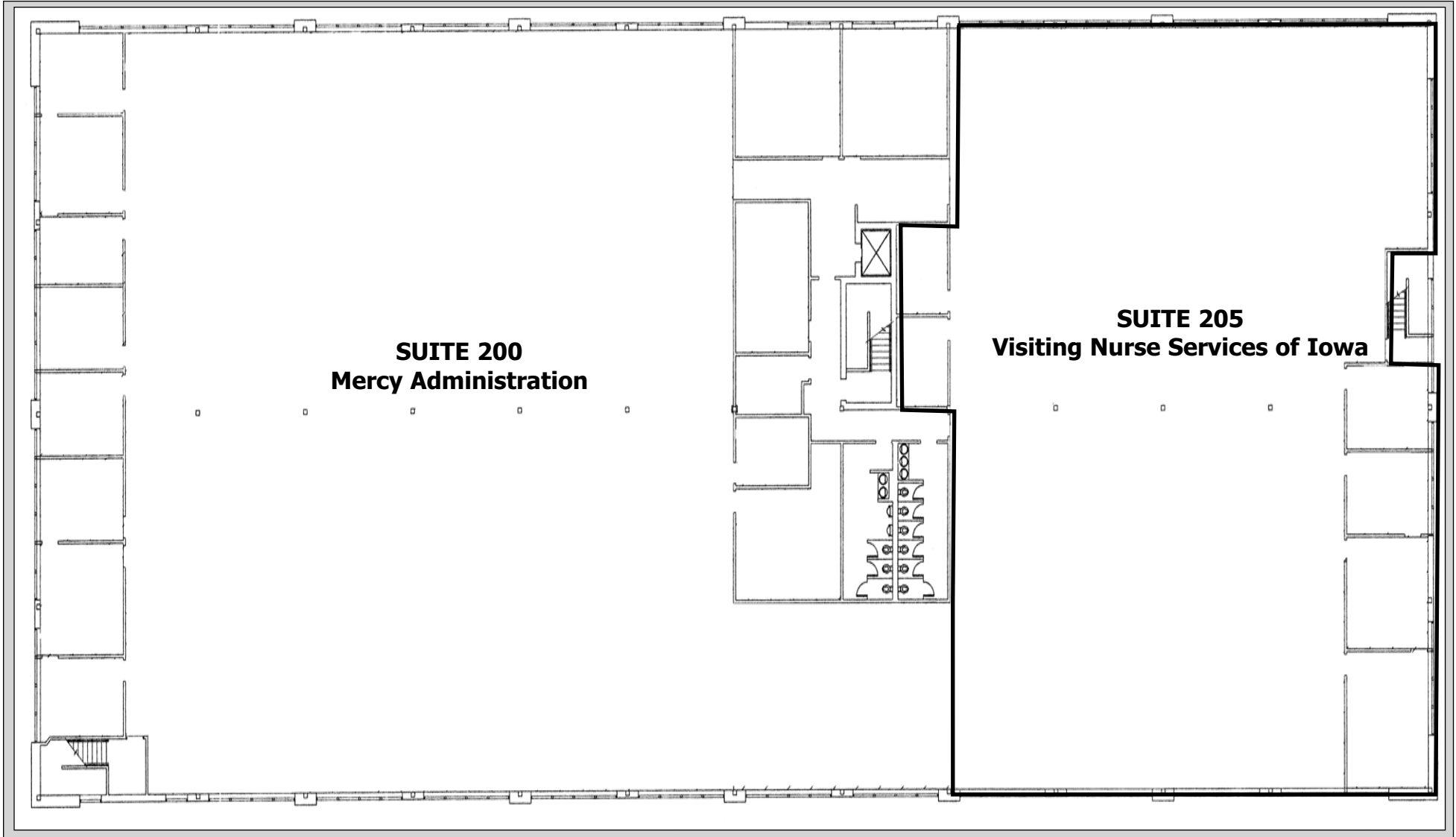
Information contained herein is believed to be accurate but is not warranted as to accuracy and may change or be updated without notice. Seller or landlord makes no representation as to the environmental condition of the property and recommends purchaser's or tenant's independent investigation.



28,080 SF Floor Plate Size



Information contained herein is believed to be accurate but is not warranted as to accuracy and may change or be updated without notice. Seller or landlord makes no representation as to the environmental condition of the property and recommends purchaser's or tenant's independent investigation.



28,080 SF Floor Plate Size



Information contained herein is believed to be accurate but is not warranted as to accuracy and may change or be updated without notice. Seller or landlord makes no representation as to the environmental condition of the property and recommends purchaser's or tenant's independent investigation.